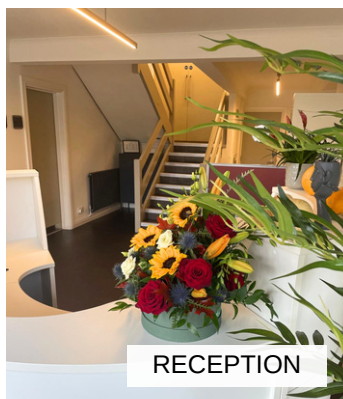


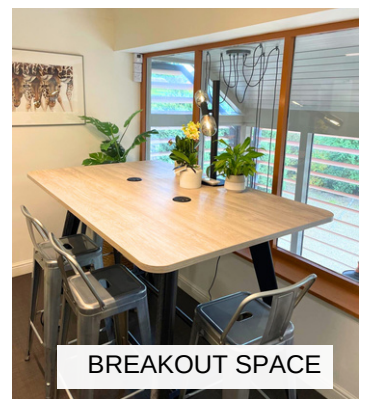
SANDERUM HOUSE



RECEPTION



MR1



BREAKOUT SPACE

## SPECIFICATION

- Stunning, contemporary, ground floor, newly refurbished 3 workstation suite
- High-speed, business grade, gigabit fibre broadband
- VOIP handset (1 included)
- LED lighting & air-conditioning
- 24/7 secure access
- Fully inclusive pricing with all aspects of building compliance included
- Flexible terms - minimum licence 4 months
- 20% discount on MR1 (Chinnor) & The Cellar (Thame) meeting rooms
- On-site parking
- Conveniently-located near to Junction 6 of M40

# ALL-INCLUSIVE PRICING

*What's included with your monthly, all-inclusive fee?*

Every office suite includes:



Rent & Rates



Energy & Utilities



Cleaning & Maintenance



Furniture



Fire & Security Alarms



Mail Handling



Tea & Coffee Facilities



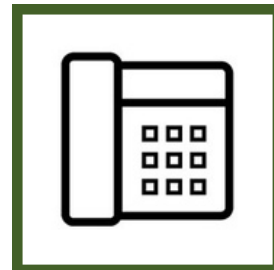
Free Parking



Access to breakout area



Preferential rates on Meeting Rooms



VOIP telephone system (1 handset per office as standard)



Professional, business grade, gigabit fibre internet



Manned Reception during working hours and 24/7 access / secure door entry system

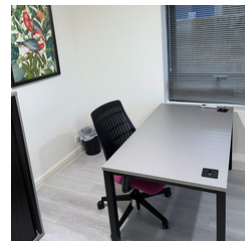
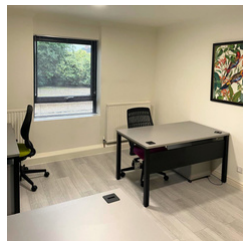
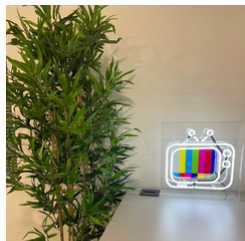
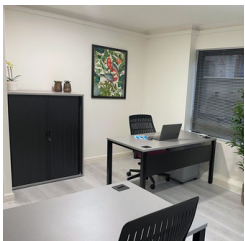


Managed by The Sanderum Centre with offices in Chinnor & Thame and third site OX9



Networking & collaboration opportunities with organised social events

The main benefits of our serviced office suites are ease, flexibility and total transparency via all-inclusive monthly pricing. We offer short, 4 month contracts providing the stability of fixed overheads with the convenience and flexibility of easy in/out space that can grow and flex as needed for total peace of mind.



**Not all office space is the same**

Book a tour to find out why serviced office space is so cost-effective